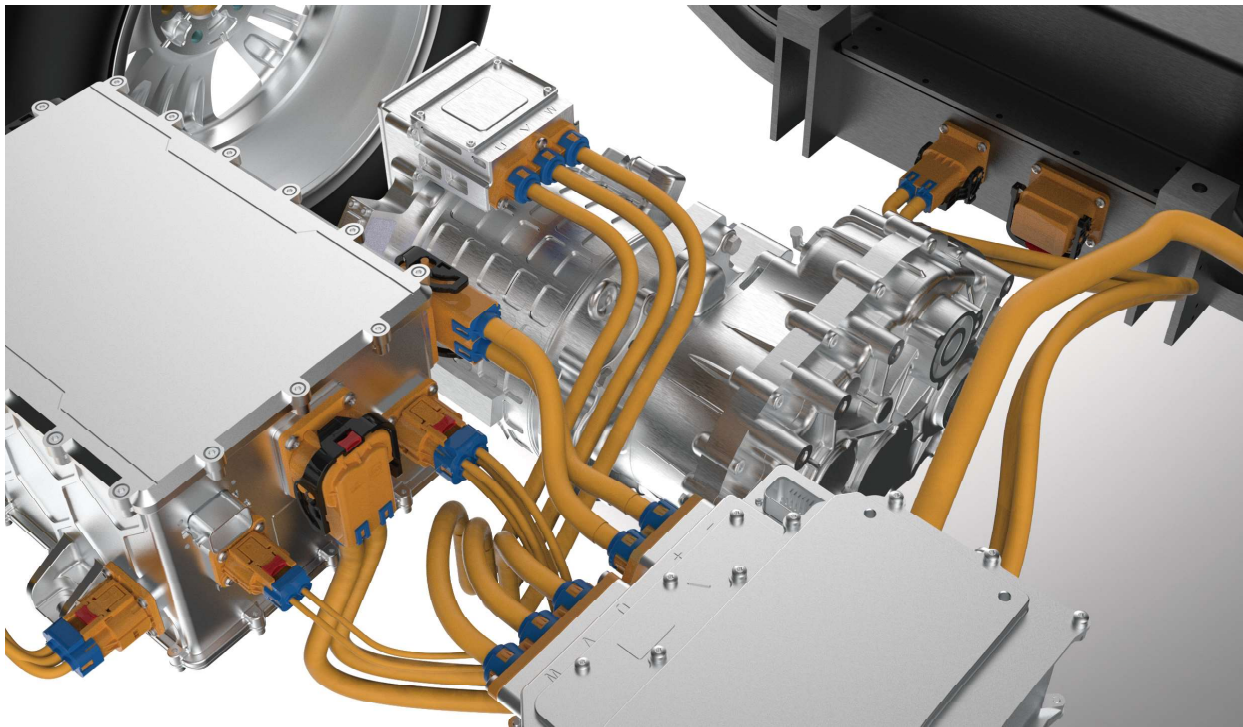




WAIN New Energy Automotive Industry Applications



WAIN website



WAIN mall



WAIN video No

WAIN PROVIDES SOLUTIONS FOR THE NEW ENERGY AUTOMOTIVE INDUSTRY APPLICATIONS

WAIN specializes in industrial connectors, and has won the trust of many OEMs and end customers and become their partners with reliable and sophisticated technologies and solutions. Through the unremitting efforts of all employees, WAIN have been ISO9001:2015, ISO14001:2015, IRIS and IATF16949 certified, and has embarked on a healthy development path in quality management. At the same time, we continue to communicate and cooperate with professional equipment manufacturers, strive to realize production automation, and provide a strong guarantee for efficient production and stable product quality.

In the field of new energy vehicles, through years of accumulation, the company has a number of highly capable technology R & D teams; The product series has been continuously improved, and mature and reliable vehicle interconnection system products have been provided, such as AC and DC charging gun / seat, high-voltage connector, manual maintenance switch (MSD), power exchange connector, perforated connector (IPT), on-board signal connector, etc.

"Simulation analysis" is introduced in the process of new product development to provide guarantee for new product development cycle and design quality. At present, four main analysis modules (dynamic simulation, mode flow analysis, electromagnetic compatibility analysis and structural strength analysis) have been constructed: structural analysis, thermal analysis, signal integrity and electromagnetic compatibility analysis and mode flow analysis.

The establishment of an independent new energy test center has further improved the product development and verification rate. Product test capabilities include environmental test, electrical performance test, mechanical performance test and sealing test. It can completely cover the test standards of domestic and foreign automotive high voltage connectors such as GB/T37133, QC/T29106, USCAR2.0, LV214, LV215, GMW3191 etc.

WAIN is willing to cooperate with you in the future with professional technology, reliable products and warm service.



WAIN PRODUCT QUALITY TESTING SERVICE

WAIN LAB IS A UL CERTIFIED WITNESS LABORATORY, WHICH CAN INDEPENDENTLY CARRY OUT ROUTINE ELECTRICAL, MATERIAL MECHANICS, SURFACE TREATMENT, ENVIRONMENTAL PROTECTION, MECHANICAL LIFE AND OTHER EXPERIMENTS IN THE FIELD OF CONNECTORS.

PROFESSIONAL INTERNATIONAL TESTING STANDARDS;
 RELIABLE TEST AND VERIFICATION METHODS;
 TRANSPARENT, FAIR AND TRACEABLE ANALYTICAL VALIDATION TESTS AND REPORTS;
 PROFESSIONAL UL WITNESS LABORATORY.

WAIN QUALITY GUARANTEE

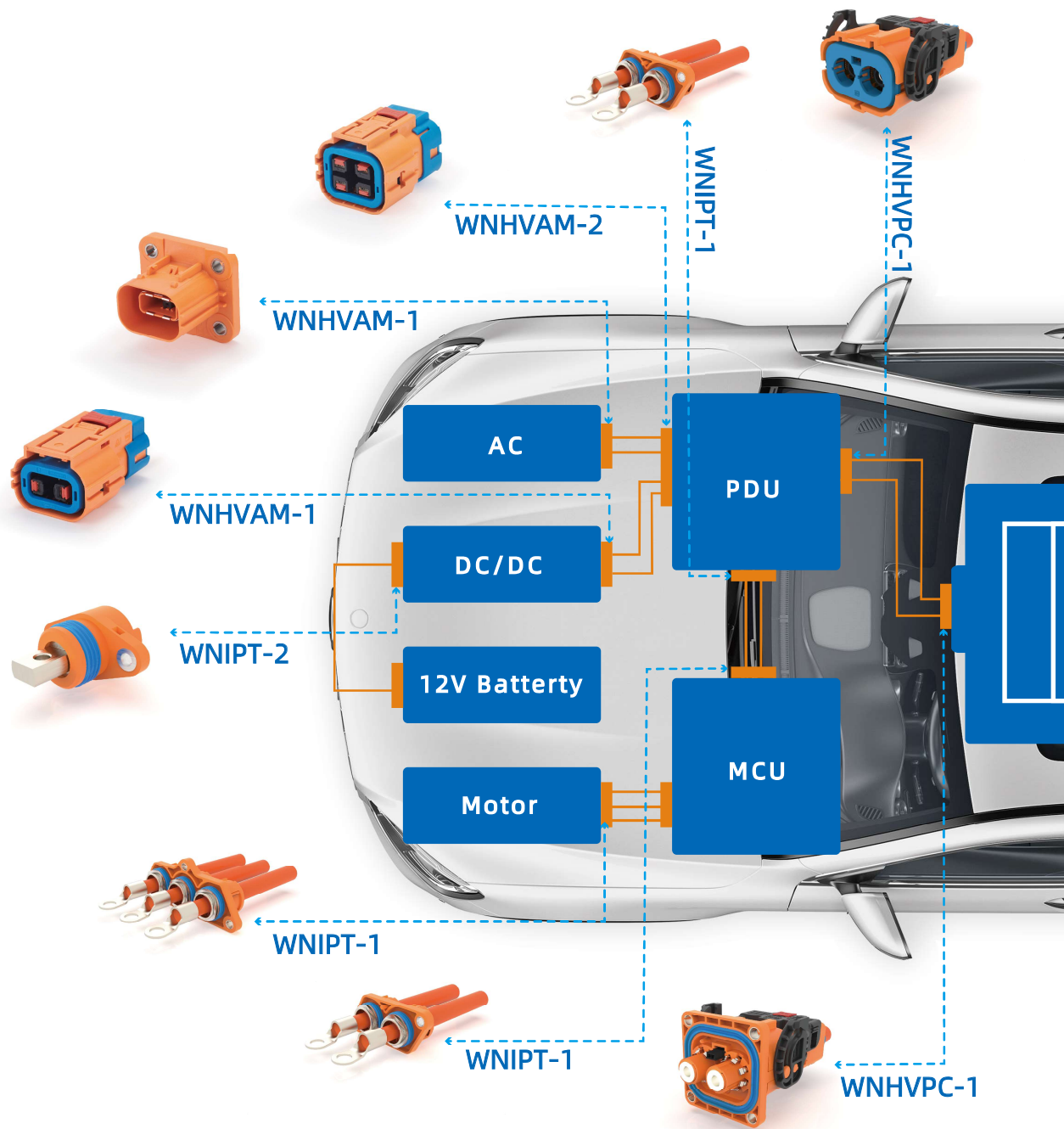
MANAGEMENT SYSTEM CERTIFICATION
 ISO9001:2015 SYSTEM ISO14001:2015 SYSTEM INTERNATIONAL RAILWAY INDUSTRY STANDARD: IRIS

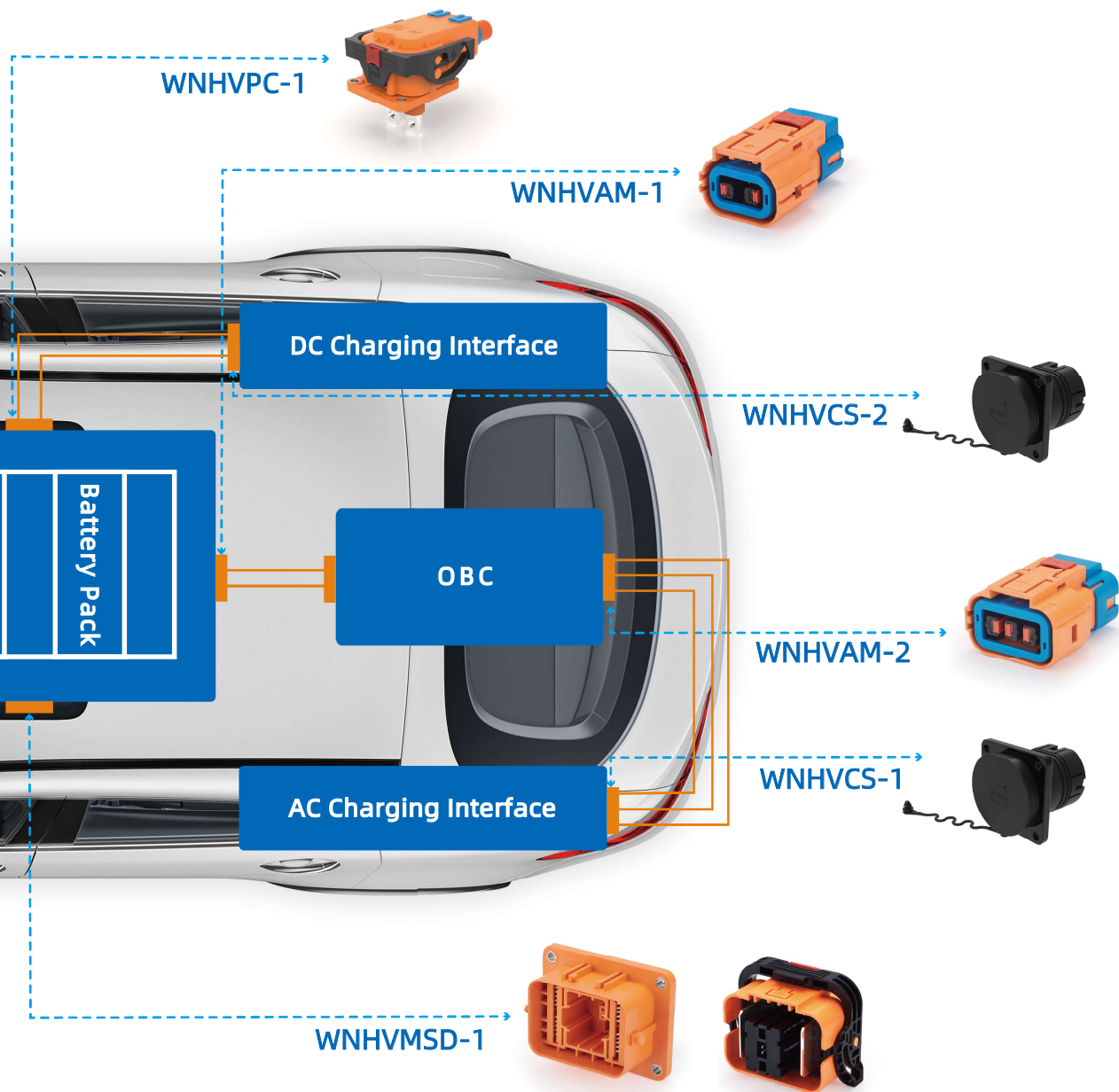




- PRODUCT CERTIFICATION
 GLOBAL PRODUCT CERTIFICATION



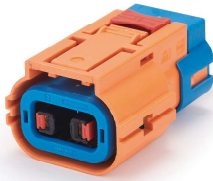
High Voltage Interconnection Diagram of EV





 : High Voltage Connector
 : High Voltage Cable

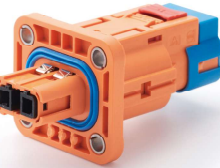
■ WNHVAM-1 Series Products



Plug



Receptacle



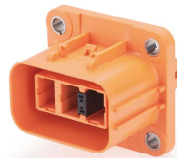
After mating

TECHNICAL PARAMETER	SPECIFICATIONS	APPLICATION
<ul style="list-style-type: none"> · Secondary locking · Suitable Cable: 2.5mm²~4mm² · Fool-proof Key · HVIL · Protection against electric shock · 360 ° shielding 	<ul style="list-style-type: none"> · Rated Current: 25A (MAX) · Rated Voltage: 800V · Insulation Resistance: ≥100MΩ · Working Temperature: -40°C~+125°C · Protection Degree: IP67&IP6K9K (after mating), IP2XB 	<ul style="list-style-type: none"> · Battery, PDU, Electric Control

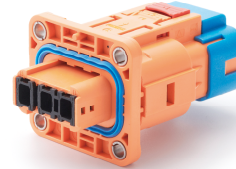
■ WNHVAM-2 Series Products



Plug



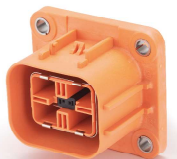
Receptacle



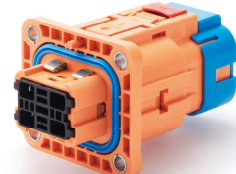
After mating



Plug



Receptacle



After mating

TECHNICAL PARAMETER	SPECIFICATIONS	APPLICATION
<ul style="list-style-type: none"> · Secondary locking · Suitable Cable: 2.5mm²~6mm² · Fool-proof Key · HVIL · Protection against electric shock · 360 ° shielding 	<ul style="list-style-type: none"> · Rated Current: 40A (MAX) · Rated Voltage: 800V · Insulation Resistance: ≥100MΩ · Working Temperature: -40°C~+125°C · Protection Degree: IP67&IP6K9K(after mating), IP2XB 	<ul style="list-style-type: none"> · PDU, Electric Control

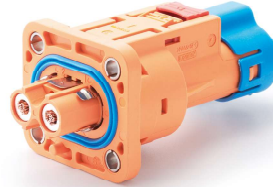
■ WNHVAM-3 Series Products



Plug



Receptacle



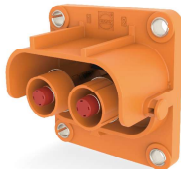
After mating

TECHNICAL PARAMETER	SPECIFICATIONS	APPLICATION
<ul style="list-style-type: none"> · Secondary locking · Suitable Cable: 2.5mm²~10mm² · Fool-proof Key · HVIL · Protection against electric shock · 360° shielding 	<ul style="list-style-type: none"> · Rated Current: 70A (MAX) · Rated Voltage: 800V · Insulation Resistance: ≥100MΩ · Working Temperature: -40°C~+125°C · Protection Degree: IP67&IP6K9K(after mating), IP2XB 	<ul style="list-style-type: none"> · PDU, Electric Control

■ WNHVPC-1 Series Products



Plug



Receptacle



After mating



Plug



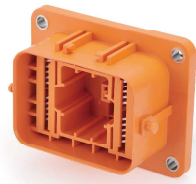
Receptacle



After mating

TECHNICAL PARAMETER	SPECIFICATIONS	APPLICATION
<ul style="list-style-type: none"> · Secondary locking · Suitable Cable: 25mm²~50mm² · Fool-proof Key · HVIL · Protection against electric shock · 360° shielding 	<ul style="list-style-type: none"> · Rated Current: 200A (MAX) · Rated Voltage: 1000V · Insulation Resistance: ≥100MΩ · Working Temperature: -40°C~+125°C · Protection Degree: IP67&IP6K9K(after mating), IP2XB 	<ul style="list-style-type: none"> · Battery, PDU, Electric Control

■ WNHVMSD-1 Series Products



Receptacle



Plug

TECHNICAL PARAMETER	SPECIFICATIONS	APPLICATION
<ul style="list-style-type: none"> · Secondary locking · HVIL 	<ul style="list-style-type: none"> · Rated Current: 250A (MAX) · Rated Voltage: 750V (According to fuse) · Insulation Resistance: $\geq 100M\Omega$ · Working Temperature: $-40^{\circ}C \sim +125^{\circ}C$ · Protection Degree: IP67&IP6K9K(after mating)、IP2XB 	<ul style="list-style-type: none"> · Battery

■ WNHVCS-1 Series Products



Receptacle



Plug

TECHNICAL PARAMETER	SPECIFICATIONS	APPLICATION
<ul style="list-style-type: none"> · Meet the requirements of the latest national standard 	<ul style="list-style-type: none"> · Rated Current: 63A (MAX) · Rated Voltage: 220V/440V · Insulation Resistance: $\geq 100M\Omega$ · Working Temperature: $-30^{\circ}C \sim +105^{\circ}C$ · Protection Degree: IP55 	<ul style="list-style-type: none"> · Charging port

■ WNHVCS-2 Series Products



TECHNICAL PARAMETER	SPECIFICATIONS	APPLICATION
<ul style="list-style-type: none"> · Meet the requirements of the latest national standard 	<ul style="list-style-type: none"> · Rated Current: 250A (MAX) · Rated Voltage: 750V/1000V · Insulation Resistance: $\geq 100M\Omega$ · Working Temperature: $-30^{\circ}C \sim +105^{\circ}C$ · Protection Degree: IP55 (after mating) 	<ul style="list-style-type: none"> · Charging port

■ WNIPT-1 Series Products



TECHNICAL PARAMETER	SPECIFICATIONS	APPLICATION
<ul style="list-style-type: none"> ·crew Terminal ·Suitable Cable: 16mm²~50mm² ·Fool-proof Key ·360°shielding 	<ul style="list-style-type: none"> ·Rated Current: 300A (MAX) ·Rated Voltage: 1000V ·Insulation Resistance: ≥100MΩ (power) ·Working Temperature: -40°C~+125°C ·Protection Degree: IP67&IP6K9K (after Mounted) 	<ul style="list-style-type: none"> ·Battery, electric control, motor

■ WNIPT-2 Series Products



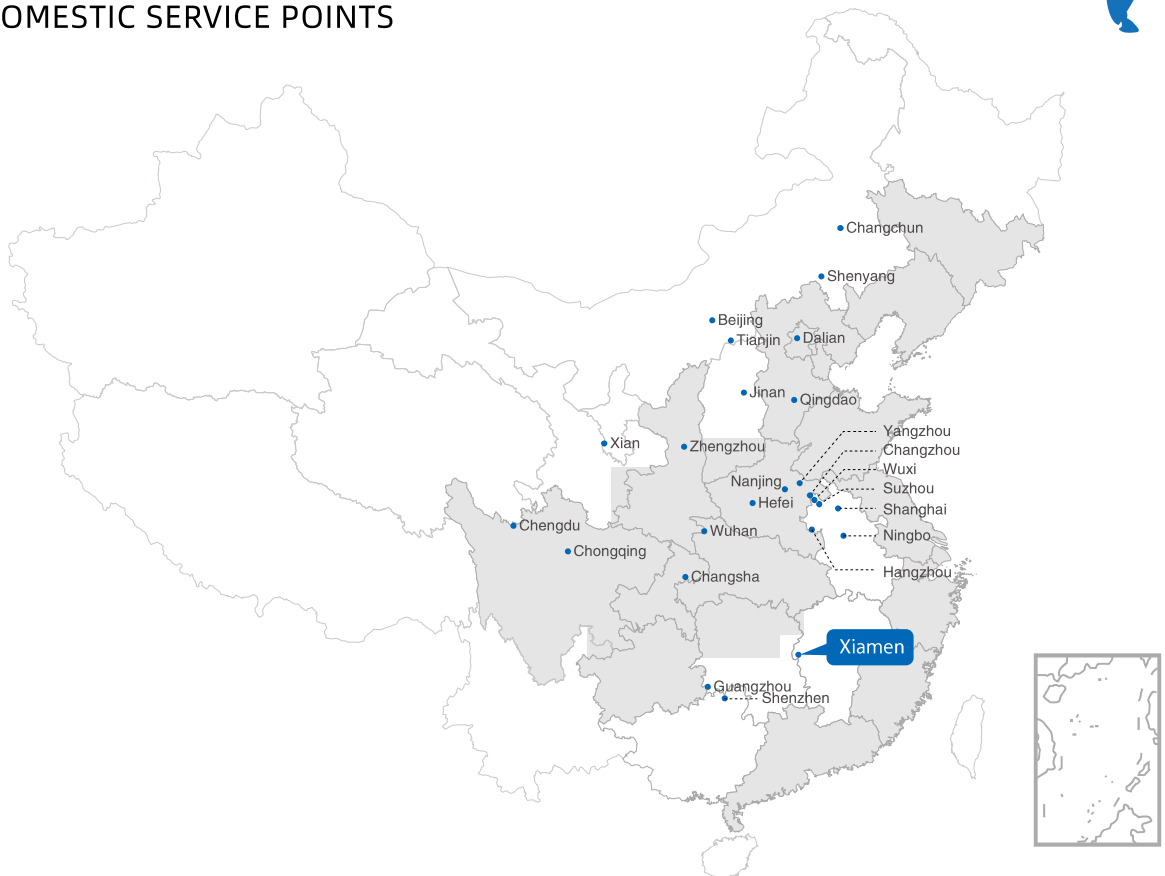
TECHNICAL PARAMETER	SPECIFICATIONS	APPLICATION
<ul style="list-style-type: none"> ·Screw Terminal ·Fool-proof Key 	<ul style="list-style-type: none"> ·Rated Current: 200A (MAX) ·Rated Voltage: 24V ·Insulation Resistance: ≥100MΩ ·Working Temperature: -40°C~+125°C ·Protection Degree: IP67&IP6K9K (after Mounted) 	<ul style="list-style-type: none"> ·Electric control

INTERNATIONAL SERVICE POINTS

- WAIN established a branch in Germany in 2013.
- In 2019, a branch was registered and established in Singapore.
- There are agents or distributors in Europe, America, Southeast Asia, South Korea, Japan, etc.



DOMESTIC SERVICE POINTS



- Free hotline in Mainland China : 400-882-5885
- WAIN has offices in Beijing, Shanghai, Guangzhou, Shenzhen, Xi'an, Chengdu, Changsha, Hangzhou, Ningbo, Wuhan, Qingdao, Jinan, Suzhou, Yangzhou, Changzhou, Nanjing, Shenyang, Changchun, Dalian and other places, with agents or distributors throughout the industrial cities.
- WAIN has set up wire harness processing plants in Kunshan and Wuhan to provide customers with more convenient and fast wire harness processing services.



XIAMEN WAIN ELECTRICAL CO.,LTD.

Address: No.759-3, Chaoyuan Road, Tong'an District,
Xiamen, Fujian,China

Postal Code: 361100

XIAMEN WAIN ELECTRICAL CO.,LTD. Chengdu Branch

Add: No. 879 Ganghua Road, North area of modern industrial
port, Pidu District, Chengdu,China

Tel: +86-028-87870226(Chengdu Branch)

Tel: +86-592-7227563

+86-592-7227566

+86-592-7227516

Fax: +86-592-7227569

Email: info@wainconnector.com

wainconnector@wainconnector.com

Http: www.wainconnector.com

Free hotline: 400-882-5885